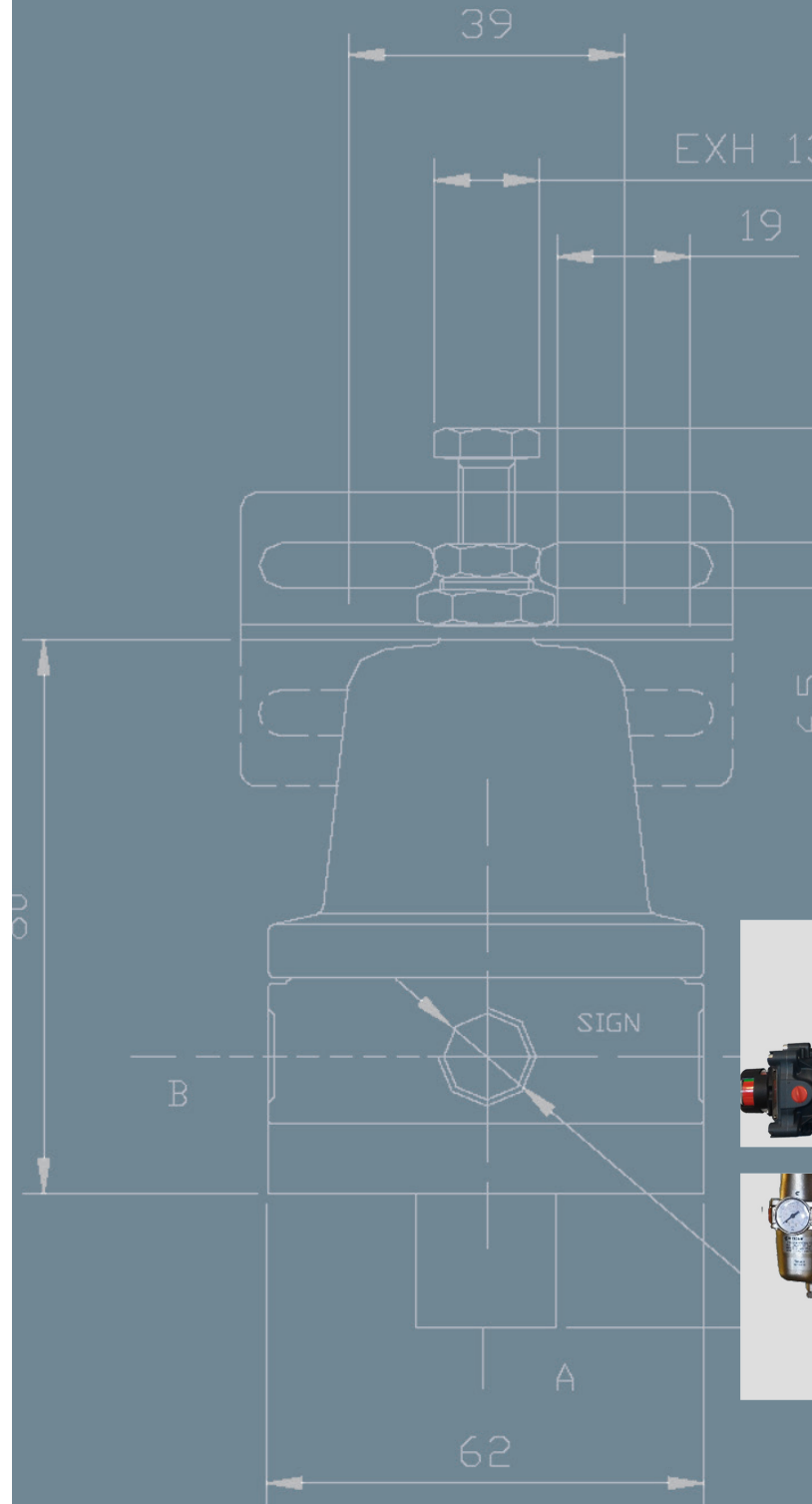


# SITECNA<sup>®</sup> TAILORED SOLUTIONS FOR CRITICAL SERVICE APPLICATIONS

Fluid control components & engineered systems  
for the most demanding applications

Designed for low or high temperature, harshest  
environments, onshore or offshore installations



Sitecna srl<sup>®</sup>  
Via G. Di Vittorio, 22  
20068 Peschiera Borromeo  
MILAN - ITALY

AUSTRALIA  
Valve and Flow Control Specialists  
[sales@valveandflowcontrolspecialists.com](mailto:sales@valveandflowcontrolspecialists.com)

## MORE THAN THIRTY YEARS OF EXPERIENCE IN THE DESIGN, MANUFACTURE & SALES OF HIGH QUALITY PRODUCTS AND SOLUTIONS. 100% MADE IN ITALY

Established in 1983 as a commercial company, Sitecna has developed a very technical and high level experience in fluid control. Thanks to a very experienced team of engineers, 20 years ago we started to design and develop an innovative range of pneumatic products to satisfy the needs of operations critical for temperature, aggressive environments and classified areas.

Today, at our headquarter located near Milan, in northern Italy, we design, build and sell components and systems for chemical, petrochemical, energy and glass sector, offering our range of pneumatic equipments for the most demanding applications.

### Flexible products for every application

Sitecna's products are the standard for non-standard specifications. Our know how in components and engineered systems stems from years of problem facing and solving for the most critical sectors.

Our innovative approach is strongly linked to market developments and quickly renews to meet always more strict requisitions. We carefully listen to our customers to improve efficiency and reliability of equipment and operations. Products have high level of customization.

### Quality first

Total quality concept is our basic strategy, influencing every single choice and providing a solid base for our actual and future growth.

Our commitment towards continuous improvements of our quality management is fully certified.

### Our products, a full range in SS316L & Copper Free Aluminum Alloy:

#### Valves

- air/gas filters
- pressure regulators
- filter regulators
- volume boosters
- lock-up valves
- balanced spool valves
- Back pressure regulators
- 2&3 ways switching valves
- Flow regulators
- Quick exhaust valves

#### Instruments & Accessories

- Vacuum pumps
- Flow meters
- Overload protectors
- Pressure gauges
- Silencers
- Tamper-proof kit

#### Engineered systems

- Panels
- Control boards
- Cabinets



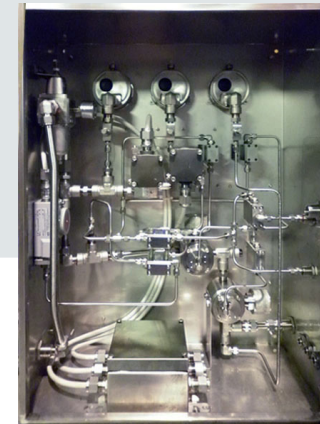
### PROVEN SOLUTIONS FOR WORLD WIDE APPLICATIONS

1. MOSE OFFSHORE PROJECT - VENICE, ITALY
2. ENI SLURRY TECHNOLOGY PROJECT - ITALY
3. BORUGE I/II/III PETROCHEMICAL PROJECT - UAE
4. TOBOLSK PP PLANT - WEST SIBERIA
5. SOUTH YOLOTEN PROJECT - TURKMENISTAN
6. LOUNYANG POLYPROPYLENE PROJECT - CHINA
7. MUNCH MUNSTER PROJECT - GERMANY
8. POLYPROPYLENE OMSK - RUSSIAN FEDERATION
9. DAMIETTA PROJECT METHANOL PLANT - EGYPT
10. RABIGH DEVELOPMENT PROJECT - UAE
11. NKNK LLDPE PLANT 230KTY - RUSSIAN FED.
12. ORYX GTL PROJECT - RAS LAFFAN QATAR
13. QAFCO V PROJECT - QATAR
14. SAFCO V PROJECT - SAUDI ARABIA
15. PRELUDE FNLJ PROJECT - AUSTRALIA
16. YAMAL LNG PROJECT - RUSSIA
17. AUSTRALIA PACIFIC LNG PROJECT
18. CLEAN FUEL PROJECT - KUWAIT
19. PUNTA CATALINA POWER PLANT PJ - COLUMBIA
20. SOUTH HELWAN PROJECT - EGYPT

## TURNKEY SOLUTIONS

### ON/OFF ACTUATOR CONTROL SYSTEMS

Modular normalized systems or custom engineered systems



### DIAPHRAGM VALVE CONTROL SYSTEMS

Simply built on actuator to suit your specific needs



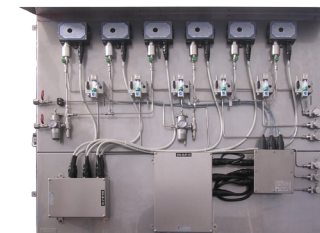
### INSTRUMENTATION SYSTEMS

Custom designed turn key instrumentation systems



### GAS MONITORING SYSTEMS

Most reliable and flexible aspirating gas monitoring systems



IP66



## AIR-GAS PREPARATION

	AIR-GAS FILTERS	PRESSURE REGULATORS	FILTER REGULATORS	BACK PRESSURE REGULATORS	PNEUMATIC RELAYS	AIR-GAS LOCK-UP VALVES
SERIES	F04-F06-F08-F12-F16-F24-F32	R04-R06-R08-R12-R16	FR04-FR06-FR08-FR12-FR16	BP04	SV; S3	LK04
SIZES	1/4".....2"NPT	1/4".....1"NPT	1/4".....1"NPT	1/4"NPT	1/4"NPT	1/4"NPT
MATERIALS	SS316L Aluminum alloy	SS316L Aluminum alloy	SS316L Aluminum alloy	SS316L	SS316L	SS316L Aluminum alloy
DESIGN TEMPERATURES	-55°C.....+90°C	-55°C.....+90°C	-55°C.....+90°C	-55°C.....+90°C	-55°C.....+90°C	-55°C.....+90°C
MAX INLET PRESSURE	30BAR x SS316L 25BAR x Aluminum alloy	30BAR x SS316L 25BAR x Aluminum alloy	30BAR x SS316L 25BAR x Aluminum alloy	35BAR	8BAR	10BAR
APPROVALS	ATEX, EAC, NACE	ATEX, EAC, NACE	ATEX, EAC, NACE	ATEX, EAC, NACE	ATEX, EAC, NACE	ATEX, EAC, NACE
AVAILABLE 3 <sup>rd</sup> PARTY CERTIFICATES	EN10204:3.1 Flow Tests, IP66	EN10204:3.1, SIL3 Flow Tests, IP66	EN10204:3.1, SIL3 Flow Tests, IP66	EN10204:3.1	EN10204:3.1, SIL3 (S3)	EN10204:3.1
NOTES	FULL MATERIAL TRACEABILITY - MADE IN ITALY					

## INSTRUMENTS & ACCESSORIES

	HIGH FLOW SILENCERS	VARIABLE AREA FLOWMETERS	OVERLOAD PROTECTORS	VARIABLE FLOW VACUUM PUMPS	PRESSURE GAUGES	PRESSURE GAUGES	
SERIES	SLVP; SLHF; SLSC	FLG55	SCLP	STVP	MBSN	MBSS; MBS6	
SIZES	1/8".....1"NPT	1/8"NPT	1/2"NPT	1/4"NPT	DN 40 / 50 / 60mm	DN 40 / 50 / 60mm	
MATERIALS	SS316L & Copper free aluminum	SS316L	SS316L	SS316L Aluminum alloy	SS304 Case/ Nickel plated brass movement & connection	SS304 (MBS5) 316 (MBS6) Case/ SS316 movement & connection	
DESIGN TEMPERATURES	-55°.....+150°	-20°.....+100°	-10°C.....+90°C	-55°C.....+90°C	-25°C.....+60°C	-52°.....+90°	
APPROVALS	ATEX, EAC, NACE	ATEX, EAC, NACE	ATEX, EAC, NACE	ATEX, EAC, NACE	ATEX, EAC, NACE	ATEX, EAC, NACE	
AVAILABLE 3 <sup>rd</sup> PARTY CERTIFICATES	EN10204:3.1	EN10204:3.1	EN10204:3.1	EN10204:3.1	IP65	IP65	
NOTES	FULL MATERIAL TRACEABILITY - MADE IN ITALY					Material traceability EN10204:3.1	

## CONTROL VALVES

	AIR-GAS VOLUME BOOSTERS	BALANCED SPOOL VALVES	FLOW REGULATORS	QUICK EXHAUST VALVES	INTRUMENTATION MANIFOLDS
SERIES	VB04-VB08 VB12-VB16	DP	RFU; RFB	VSR	MA
SIZES	1/4".....1"NPT	1/4".....3/4"NPT	1/8".....3/4"NPT	1/8"-1"NPT	1/4"-1/2"NPT
MATERIALS	SS316L Aluminum alloy	SS316L Aluminum alloy	SS316L Aluminum alloy	SS316L	SS316L
DESIGN TEMPERATURES	-55°C.....+90°C	-10°C.....+90°C	-55°C.....+90°C	-50°C.....+90°C	Max +400°C
OPERATING PRESSURE	10BAR	2.5-3BAR	12BAR	2-12BAR	0-6000PSI
APPROVALS	ATEX, EAC, NACE	ATEX, EAC, NACE	ATEX, EAC, NACE	ATEX, EAC, NACE	---
AVAILABLE 3 <sup>rd</sup> PARTY CERTIFICATES	EN10204:3.1, SIL3, IP66	EN10204:3.1, SIL3	EN10204:3.1	EN10204:3.1, SIL3	EN10204:3.1
NOTES	FULL MATERIAL TRACEABILITY - MADE IN ITALY				

## MINIATURIZED

	AIR-GAS FILTERS	PRESSURE REGULATORS	TEE FILTERS
SERIES	FM	RM	TF
SIZES	1/4"	1/8".....1/4"NPT	1/4"
MATERIALS	SS316L & polycarbonate	SS316L & POM	SS316L &
DESIGN TEMPERATURES	0-50°C	0-50°C	-55°C.....+90°C
MAX INLET PRESSURE	12BAR	16BAR	70BAR
APPROVALS	---	---	ATEX, EAC, NACE
AVAILABLE 3 <sup>rd</sup> PARTY CERTIFICATES	EN10204:3.1	EN10204:3.1	EN10204:3.1
NOTES	Liquid or gas service		

### NEW IR SPOOL VALVES for dusty environments

