



VALVE AND FLOW CONTROL SPECIALISTS
SERVICE AND RELIABILITY

Flanged non firesafe valves also available with Tfill seats for temperature range up to 650°F (340°C) for on/off valves in clean service conditions such as thermal fluids and a saturated steam rating of 425psi.



**2 PIECE FLANGED
ANSI 150 BALL VALVE**
316 Stainless Steel
Full bore
15mm to 300mm
Also available drilled AS2129 Table E
And undrilled



**2 PIECE FLANGED
ANSI 300 BALL VALVE**
316 Stainless Steel
Full bore, ISO Direct Mount
15mm to 300mm
Undrilled (We can drill to suit)



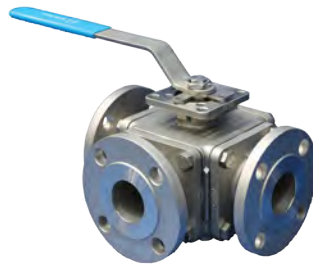
**2 PIECE FLANGED
ANSI 150 BALL VALVE**
316 Stainless Steel
ISO MOUNT Full bore
15mm to 300mm
Available undrilled



**2 PIECE FLANGED
ANSI 150 BALL VALVE**
Firesafe Certified
ISO Direct Mount
316 Stainless Steel
Full Bore TFM1600 seats
15mm to 300mm
Lockable lever to 150mm
Gear operator over 150mm



**2 PIECE FLANGED
ANSI 300 BALL VALVE**
Firesafe Certified
316 Stainless Steel
Full Bore TMF1600 seats
15mm to 250mm
Lockable lever to 150mm
Gear operator over 150mm



**3 WAY FLANGED
ANSI 150 BALL VALVE**
316 Stainless Steel
TMF1600 seats
ISO MOUNT Full bore
L or T port
25mm to 250mm



**3 WAY FLANGED
ANSI 150 BALL VALVE**
316 Stainless Steel
Full bore
L or T port
25mm to 150mm
Available undrilled



3 WAY BSP
316 Stainless Steel
High Temp TFM1600 seat
Full Bore L or T port
ISO MOUNT Lever operated
8mm to 50mm BSP
1000 PSI



3 WAY BSP
316 Stainless Steel
Reduced Bore L or T port
Lockable lever
PTFE seats
8mm to 80mm BSP
1000 PSI



1 PIECE BALL VALVE
316 Stainless Steel
Reduced Bore
Lockable lever
PTFE seats
8mm to 50mm BSP
Also available with NPT thread
1000 PSI



2 PIECE BALL VALVE
316 Stainless Steel
Full Bore
Lockable lever
PTFE seats
8mm to 100mm BSP
Also available with NPT thread
1000 PSI



2 PIECE BALL VALVE
316 Stainless Steel
Full Bore ISO MOUNT
3000 PSI
Lockable lever
Delrin seats
8mm to 50mm NPT



2 PIECE BALL VALVE
DEADMAN Spring loaded lever
316 Stainless Steel
Reduced Bore
PTFE seats
8mm to 50mm NPT 2000 PSI
8mm to 15mm Full bore



2 PIECE BALL VALVE
Firesafe Certified
Lockable lever operated
316 Stainless Steel
Full Bore, PTFE seats
2000 PSI 8mm-25mm NPT
1500psi 32 to 50mm NPT
1000psi 80 to 100mm NPT



3 PIECE BALL VALVE
316 Stainless Steel
Full Bore
Lockable lever operated
PTFE seats
8mm to 100mm BSP
1000 PSI ... Available in NPT



3 PIECE BALL VALVE
ISO DIRECT MOUNT
316 Stainless Steel
Full Bore
Lockable lever operated
PTFE seats
8mm to 100mm BSP
1000 PSI



3 PIECE BALL VALVE
HIGH TEMPERATURE
316 Stainless Steel
Full Bore
Lockable lever operated
High temperature seats
8mm to 100mm BSP
1000 PSI



3 PIECE BALL VALVE
Firesafe Certified, ISO PAD
Lockable lever operated
316 Stainless Steel
Full bore / Reduced bore
PTFE seats
8mm to 50mm NPT
2000 PSI



2 PIECE FLANGED FIRESAFE CERTIFIED BALL VALVES	
ANSI 150	ANSI 300
A216 WCB TMF1600 Seats	A216 WCB TMF1600 Seats
2 PIECE FLANGED FULL BORE	2 PIECE FLANGED FULL BORE
GEAR OPERATED OVER 150mm	GEAR OPERATED OVER 150mm
15mm to 200mm	15mm to 150mm



2 PIECE FLANGED FIRESAFE CERTIFIED BALL VALVE		
ANSI 150	ANSI 300	ANSI 600
A216 WCB FIRESAFE	A216 WCB FIRESAFE	A216 WCB FIRESAFE
FULL BORE	FULL BORE	FULL BORE
15mm to 300mm	15mm to 300mm	15mm to 80mm



FLANGED TRUNNION FIRESAFE CERTIFIED BALL VALVES				
ANSI 150	ANSI 300	ANSI 600	ANSI 900	ANSI 1500
A216 WCB	A216 WCB	A105	A105	A105
RTFE seat	RTFE seat	NYLON seat	NYLON seat	NYLON seat
FIRESAFE	FIRESAFE	FIRESAFE	FIRESAFE	FIRESAFE
100 to 400mm	200 to 300mm	50 to 300mm	100 to 200mm	50 to 100mm



VALVE AND FLOW CONTROL SPECIALISTS
SERVICE AND RELIABILITY



**1 PIECE FLANGED
ANSI 150/300 BALL VALVE**
A216 WCC
Reduced bore
PTFE seats
15mm to 250mm
Firesafe Certified API 607



**PFA Lined
2 PIECE FLANGED
ANSI 150 BALL VALVE**
Ductile Iron
Full Bore
15mm to 150mm



BALL VALVE NPT 3000psi
WCB 2PCE PEEK seats
Firesafe Certified, Full bore
Lever operated
8mm to 50mm



**BALL VALVE NPT
CLASS 1500 (3700psi)**
A105N 2PCE CTFE seats
Firesafe Certified, Full bore
Lever operated
15mm to 50mm



BALL VALVE API 602
A105N CLASS 800 (2000psi)
Full bore
Firesafe Certified
15mm to 50mm
Available in NPT or socket weld



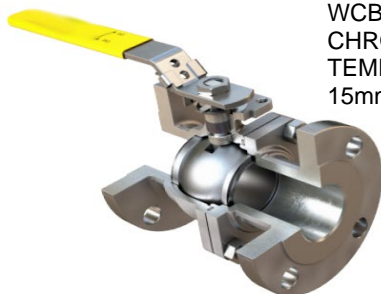
BALL VALVE NPT 2000psi
WCB 3PCE
Firesafe Certified, Full bore
ISO PAD,
Locable lever operated
15mm to 50mm



**1000PSI
BALL VALVE**
NPT
DUCTILE IRON
RPTFE seats
100mm



**3000PSI
BALL VALVE**
NPT
WCB Body
DELRIN seats
50mm and 80mm



ANSI 150/300 BALL VALVE
2 PIECE FLANGED
WCB OR CF8M BODY
CHROME CARBIDE SEAT (METAL)
TEMPERATURES UP TO 400C
15mm to 200mm



SEVERE SERVICE BALL VALVE
B/WELD, SKT/WELD, FLANGED
150 TO ASME 4500
FORGED AND CAST BODY
CARBIDE OVERLAY SEAT
MAX SERVICE TEMP 540C
8mm to 750mm