



BUTTERFLY VALVE – Cement Powder Applications

FIGURE NO. VBY-011A2S/C13143NBH/E16

End Type: Wafer AS 2129 Table D / E

Materials: Iron Body, stainless trim
NBH seat is standard on this application

Size range: 20nb – 1200mm

DesignStds: ISO 5752 face to face

ISO 5211 top flange

API 598 leakage test

Max Operating pressure 16 bar

(20nb 10 bar)

Max Differential pressure 16 bar

(20nb 10 bar)

Max temp. -20 Deg C – 160 Deg C

(dependant on elastomer)

Vacuum 0,2 bar absolute

(depending on medium and temperature)

Features: Drip tight in both directions

Triple shaft bearings prevents shaft deflection

Slim low profile disc

Low torques due to bearings and machining.

Options: Bodies in Aluminium, Alum Brz, Nodular iron,

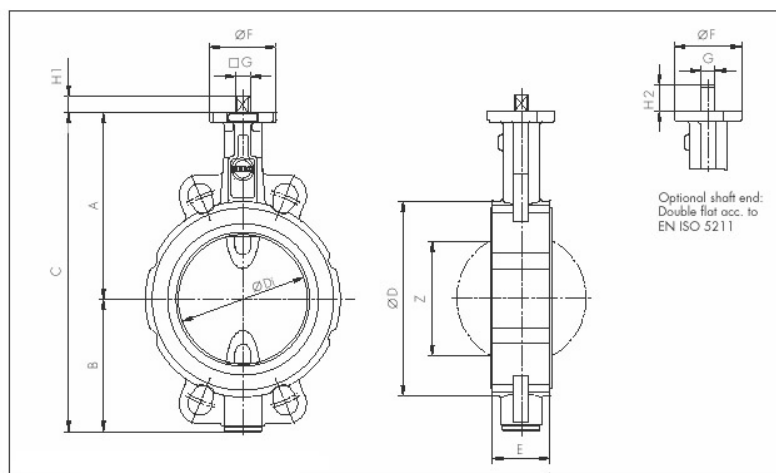
Stainless steel and cast steel

Liners in EPDM, Nitrile, CSM, FPM and VSI

Discs in s/s (6 grades), Alum Brz, Nod. Iron coated.

Actuation is lever op standard, worm gear op,

Pneumatic or electric versions.



Butterfly Valve

QUEENSLAND

VALVE AND FLOW CONTROL SPECIALISTS



VALVE AND FLOW CONTROL SPECIALISTS
SERVICE AND RELIABILITY

VBY-011A2S/C13143NBH/E16

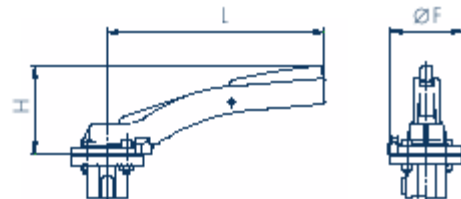
DN [mm]	Size [in]	Dimensions [mm]												Weight [kg] (GG-25)	
		A	B	C	D	Di	E	F	Flange	G	H1	H2	Z	2 Piece Shaft	TS- Shaft
20	3/4	104	45	149	59	31,5	33	54	F04	11	12	19	-	1,3	-
25	1	104	45	149	63	31,5	33	54	F04	11	12	19	-	1,3	-
32	1 1/4	104	50	154	68	31,5	33	54	F04	11	12	19	-	1,4	-
40	1 1/2	113	66	179	80	38	33	54	F04	11	12	19	22	1,8	-
50	2	126	84	210	95	48,5	43	54	F04	11	12	19	25	2,2	-
65	2 1/2	134	93	227	115	63,5	46	54	F04	11	12	19	45	2,9	-
80	3	157	104	261	138	78,5	46	65	F05	14	16	25	65	4,0	4,5
100	4	167	115	282	158	98,5	52	65	F05	14	16	25	85	5,2	5,8
125	5	180	127	307	188	123,5	56	65	F05	14	16	25	111	6,9	7,5
150	6	203	150	353	212	148	56	90	F07	17	19	30	139	9,5	11,0
200	8	228	176	404	268	199	60	90	F07	17	19	30	190	13,2	15,0
250	10	266	212	478	320	248	68	125	F10	22	24	39	240	22,5	25,5
300	12	291	237	528	370	296	78	125	F10	22	24	39	287	31,5	35,0
350	14	332	269	601	408	338	78(92)**	150	F12	*	*	-	330	39,4	45,0
400	16	363	314	677	470	388	102	150	F12	*	*	-	378	58,7	64,5
450	18	397	335	732	530	430,5	114	210	F16	*	*	-	417	91,0	95,5
500	20	437	405	842	574	494,5	127	210	F14/F16	*	*	-	474	107,0	113,5
600	24	498	469	967	675	590	154	300	F16/F25	*	*	-	563	171,0	198,0
700	28	581	507	1088	772	680	165	300	F16/F25	*	*	-	660	251,0	304,0
800	32	630	556	1186	874	780	190	300	F25	*	*	-	757	355,0	375,0
900	36	696	617	1313	973	880	203	300	F25	*	*	-	860	456,0	498,0
1000	40	771	675	1446	1070	980	216	350	F30	*	*	-	956	570,0	718,0
1200	48	880	810	1690	1510	1170	254	350	F30	*	*	-	1154	-	1156,0

* according to the mounted actuator
** face to face dim. acc. to EN 558 Tab. 20 (92 mm)

Subject to change without notice.

HAND LEVER

DN [mm]	Size [in]	Hand Lever	F	H	L	Weight [kg]
20- 65	3/4-2 1/2	Size I	54	70	155	0,1
80-125	3-5	Size II	65	80	195	0,15
150-200	6-8	Size III	90	100	276	0,5



Refer data sheet VBY-Z011AST for further technical data such as torques, Kv's, actuator accessories and spares parts lists.