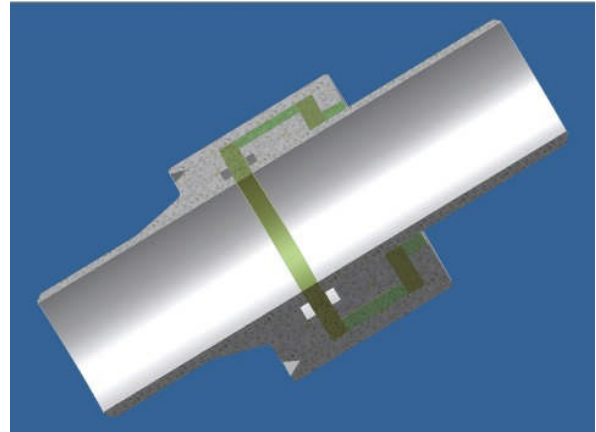
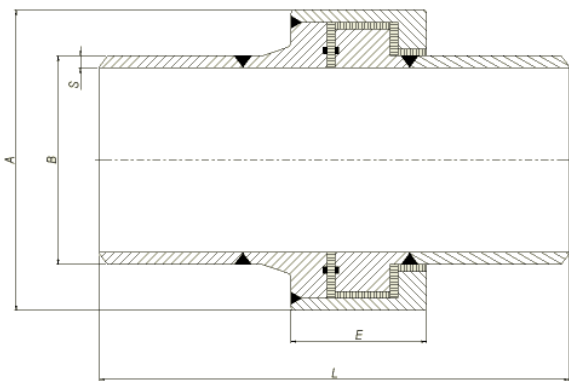




MONOLITHIC INSULATING JOINTS GIB MODEL

A Monolithic Insulating Joint is a welded pre-Fabricated 3-pieces union, for pipeline electrical sectioning, commonly used when the Cathodic Protection is present to prevent any interference with the corrosion control.



The Insulating Joints are designed as per the requirement of, but not limited to, the following Codes and Standards:

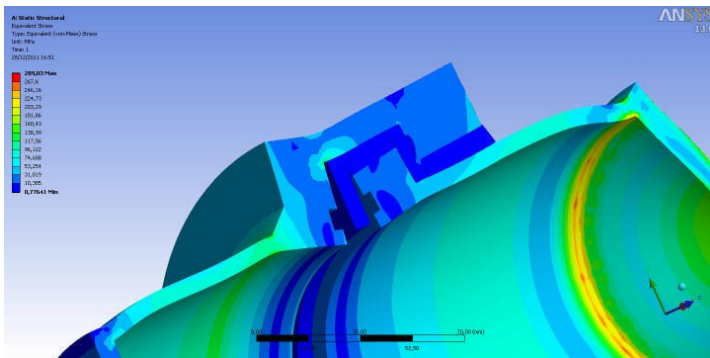
ASME VIII div.I App.2

ASME IX

ASME B31.8, B31.4, B31.3

NACE MR0175

UNI 11105



In addition, the design phase involves a finite element analysis to identify the most stressed areas and to control the heat loss during welding operations.

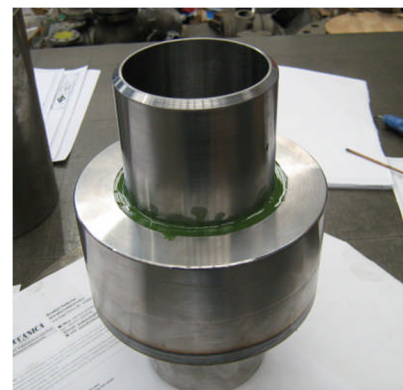
The construction is specifically oriented to the connected pipes, assuring a comparable overall strength, matching all the internal dimension to allow possible pig smooth passage; the pups length is calculated in order to protect the joint mechanical and electrical integrity during the welding activities.

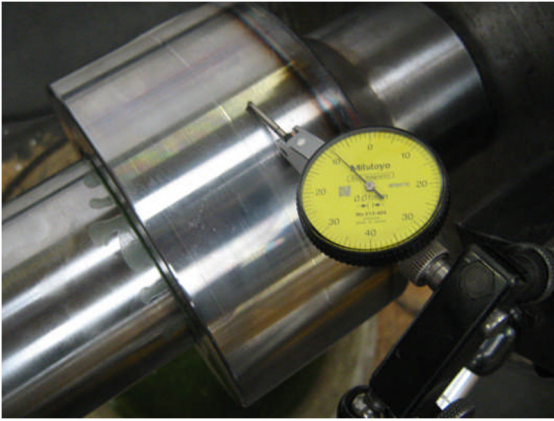
The actual production is oriented to the following:

Size: up to 28"

Class: up to #900

Other dimensions and class will be available on request.





Each insulating joint is hydraulic tested twice at 150% of the design pressure, with a intermediate stage of 30 cycles of 0-120% of the design pressure, monitoring the possible deformation.

In addition, each Joint shall pass the insulation capability test, to prove the electrical resistance and dielectric strength as per the required parameters.



For any information or enquiry please contacts us!

Valve and Flow Control Specialists

Melbourne Sydney Brisbane Darwin
AUSTRALIA

Email: sales@valveandflowcontrolspecialists.com