



VALVE AND FLOW CONTROL SPECIALISTS
SERVICE AND RELIABILITY

Series J6 33

Sizes & -) \$-, \$-°\$\$-°) \$-&\$\$-&) \$

Vacuum Breaker Valve



Threaded



Flanged

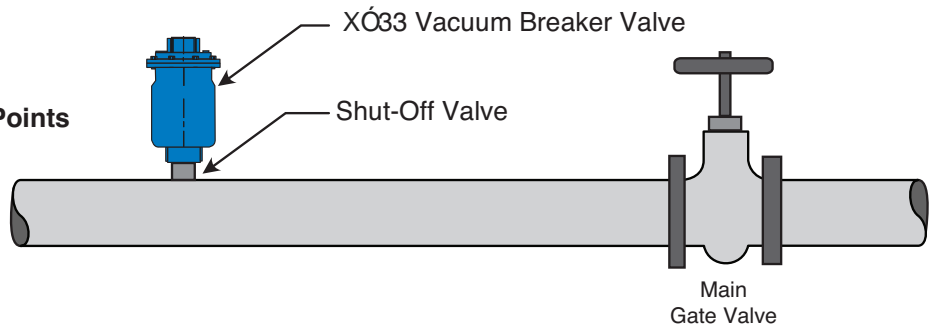
- Fully unrestricted vacuum protection
- 400 psi maximum operating pressure
- Resilient seat included for drip-tight closure
- Large valve orifice allows for air intake at 1/4 psi vacuum
- Standard epoxy coated ductile iron body
- Easily Serviced without removal from pipeline

Designed to protect pipelines from vacuum collapse, the V03H Vacuum Breaker Valve prevents gas formation. The valve's large intake orifice freely admits air during pipeline draining.

Valve servicing is simple because the internal components can be replaced without removal of the valve body from the pipeline.

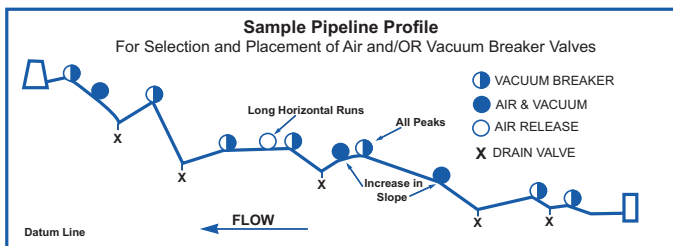
Typical Applications

- Transmission Pipeline High Points
- Water Treatment Plant Piping High Points



Installation

Series X03H Vacuum Breaker Valves are typically installed at anticipated pipeline vacuum occurrence locations.



Operation

Vacuum Prevention Mode

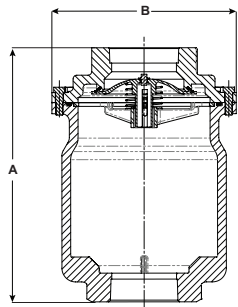
When line pressure drops below positive pressure and the liquid level lowers, the poppet drops, unseating the valve and allowing air into the line, thus preventing a vacuum condition from forming.

Note: Available for Seawater Service, see Material Specifications

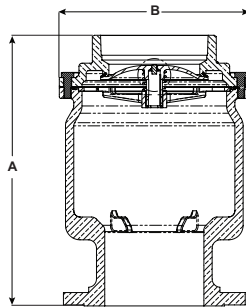
Dimensions (in Inches)

MODEL J6 33

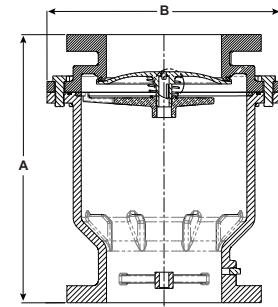
Valve Size	Pressure Class 300 Lb Threaded X Threaded				Pressure Class 150 Lb Flanged X Threaded				Pressure Class 150 Lb Flanged X Flanged	
	1"	2"	3"	4"	2"	3"	4"	6"	8"	10"
A	9.10	12.44	12.75	12.75	13.88	15.56	15.75	16.38	18.62	20.50
B	6.25	7.50	9.00	9.00	7.50	9.25	9.25	11.00	16.25	18.25
Inlet (ANSI)	1" NPT	2" NPT	3" NPT	4" NPT	2"	3"	4"	6"	8"	10"
Outlet (NPT)	1" NPT	2" NPT	3" NPT	4" NPT	2" NPT	3" NPT	4" NPT	6" NPT	8"	10"
Number of Holes	—	—	—	—	4	4	8	8	8	12
Diameter of Bolts	—	—	—	—	.63	.63	.75	.75	.75	.88
Shipping Wt. (Lb.)	25	29	38	40	39	48	50	70	139	206



Threaded x Threaded



Flanged x Threaded



Flanged x Flanged

Pressure Ratings

Valve Body & Cover		Pressure Class			
		Flanged			Threaded
Grade	Material	ANSI Standards*	150 Class	300 Class	End‡ Details
ASTM A536	Ductile Iron	B16.42	250	400	400
---	All Other Materials	---	285	400	400

Note: * ANSI standards are for flange dimensions only. Flanged valves are available flange faced but not drilled.
‡ End Details machined to ANSI B2.1 specifications.

Available Materials

- Epoxy Coated Ductile Iron ASTM A536 65-45-12
- Epoxy Coated Cast Steel ASTM A216WCB
- ASTM B61 Naval Bronze
- ASTM B 148 NI Aluminum Bronze
- 316 Stainless Steel
- Duplex Stainless Steel
- Super Duplex Stainless Steel
- Bronze

Specifications

Standard Internals

Seals: Nitrile Rubber or Optional Viton®
Remainder of Internal Components: Stainless Steel and Delrin

Temperature Range

Water to 180° F

Optional:

1. Hood / Screen Assembly
2. Goose Neck available 1" - 4"

When Ordering, Specify:

1. Catalog # VBHH
2. Valve Size
3. Pressure Rating
4. Materials

Valve Sizing Selection

Large Orifice Vacuum Capacity

Determine anticipated water flow and allowable pressure differential for the pipeline application. Select valve from chart to exhaust or admit air at the same rate as water filling or draining (in CFS). For larger flows, two or more Model VBHHs may be installed in parallel

