



**VALVE AND FLOW CONTROL SPECIALISTS**  
*SERVICE AND RELIABILITY*

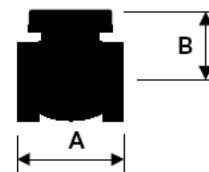
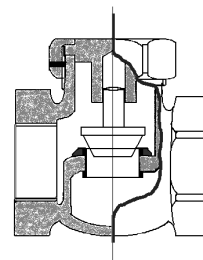
**Bronze Piston Check Valve  
Union Bonnet SS Seat and Disc**

**FIGURE NO. VCP-B521**

**End Type:** BSP Taper  
**Material:** ASTM B62 BRONZE



- 1750kpa @ 260 Deg C (for steam)  
3450kpa @ 120 Deg C (or CWP)
- High quality robust heavy duty steam piston check valve for allowing uni-directional flow in horizontal applications.
- Pinned union bonnet (as required by the steam boiler code).
- Stainless steel stem / pintle (as opposed to brass).
- Complies with the “John” standard face to face dimensions allowing continuity of supply and replacement.
- Replaceable stainless steel seat and disc.
- Size range to 50mm.
- Matching Globe valve available see Figure no. VGL-B501.



VALVE SIZE	15	20	25	32	40	50
FACE-FACE A mm	74	89	102	116	132	160
HEIGHT B mm	41	43	55	64	75	93

Materials of Construction		
1	Body	Bronze B62
2	Seat Ring	410 s/s
3	Disc	410 s/s
4	Stem Pintle	410 s/s
5	Union nut	Bronze B62
6	Grub screw	A105

**NOTE – Long pattern Face to face also available**

**HOW TO SPECIFY:**

Piston check valve to be of ASTM B62 Bronze body and Union nut with 410 stainless steel trim designed to BS 5154 and compliant to DLI boiler / steam code AS 1271, including locked bonnet design, BSP taper threads. VCS figure no. VCP-B521 or equivalent.

Uncontrolled document subject to change without notice

VALVE AND FLOW CONTROL SPECIALISTS  
Brisbane Sydney Melbourne Darwin  
E-mail sales@valveandflowcontrolspecialists.com