



# DDP Pneumatic series



VALVE AND FLOW CONTROL SPECIALISTS  
SERVICE AND RELIABILITY

**Spring return & double acting  
compact actuator**





## INDEX

<b>1</b>	<b>APPLICATIONS</b>	<b>Page 3</b>
<b>2</b>	<b>CERTIFICATIONS</b>	<b>Page 5</b>
<b>3</b>	<b>FEATURES</b>	<b>Page 6</b>
<b>4</b>	<b>MODEL TYPES</b>	<b>Page 12</b>

Contact details: +44 (0) 1454 885500      T: +44 (0) 1454 885500  
 51 GHF 5@-5  
 6f]gVUby`GnXbYmiA Y`Vci fbY`DYfH `8Ufk ]b



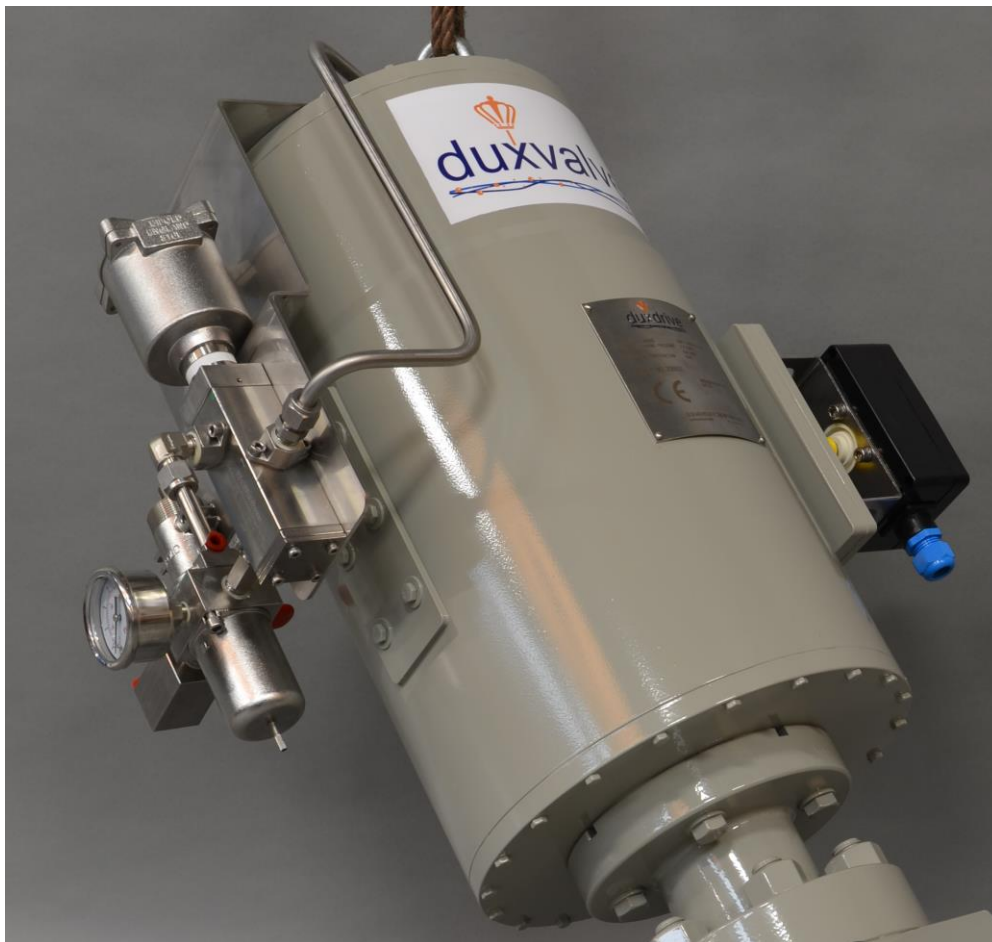
## 1. APPLICATIONS

The Duxdrive DDP series is a high quality pneumatic actuator. This actuator is developed to operate Duxvalves choke valves. As these valves are often used for modulation purpose, a high accuracy of the valve stem is required. Therefore, a smooth running output rotation has become one of the key features of the Duxdrive actuator.

### Details:

- **Half turn rotation**
- **Spring return or double acting**
- **Temperature range**
  - **Standard range: -20°C to 90°C (-4°F to 194°F)**
  - **Low range: -40°C to 90°C (-40°F to 194°F)**
- **Control system**

A control system could be included which could be directly mounted to the actuator with a mounting plate or cabinet.



*Duxdrive with integrated control system*



- **Closed loop**

With a closed loop a part of the cylinder exhaust air is redirected into the spring module. This efficient system ensures no vacuum is created in the container during spring action. As only clean instrument air can enter the actuator the system is recommended for outdoor installation.



*Duxdrive with closed loop system*





## 2. CERTIFICATIONS

- **Certified to SIL 3/4**
- **Suitable for use in explosive areas according to ATEX 2014/34 EU**
- **Ingress protection according to IEC-60529 IP 67**
- **Quality assurance system ISO 9001-2015**



## 3. FEATURES

### Compact design

Because of the compact design the Duxdrive is able to generate high output torques. The DDP series save space up to 70% compared to scotch yoke actuators. Ideal applications are FPSO and oil and gas rigs where space is limited, and volume restrictions are applicable. Compact building is possible due to the combined spring and cylinder container with the drive mechanism placed within.



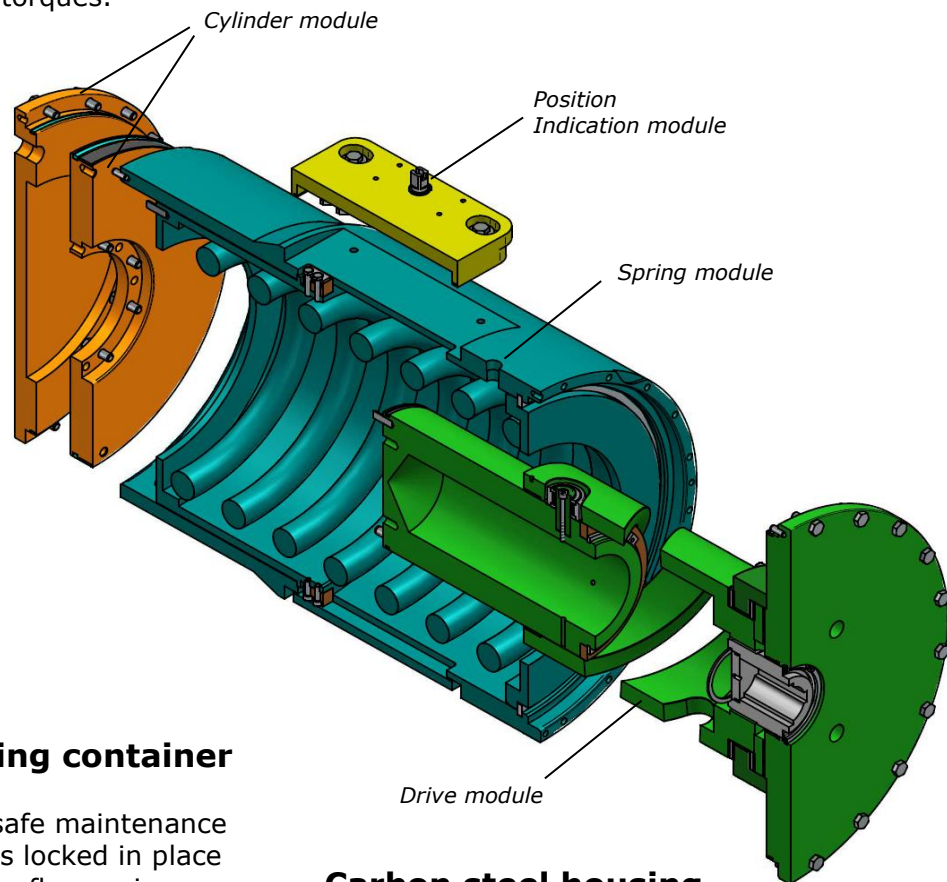
*Duxdrive compared to scotch yoke actuator mounted on a 2" 900 Lbs ball valve*

NOT JUST FOR CHOKE VALVES  
SIMPLICITY AND RELIABILITY  
FOR BALL VALVES OR QUARTER  
TURN MODULATING CONTROL  
VALVES. OPTIONAL VARIABLE  
180 or 120 DEGREE FOR 3 WAY  
L, T PORT DIVERTING OR MIXING  
VALVES



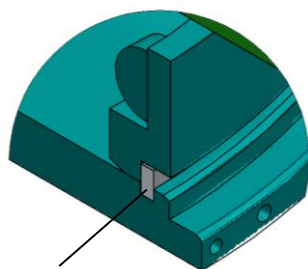
## Modular design

Modular design with drive module as base. The spring and cylinder modules are available in two or three sizes. With these options sizing is possible for different supply pressures and output torques.



## Safe spring container

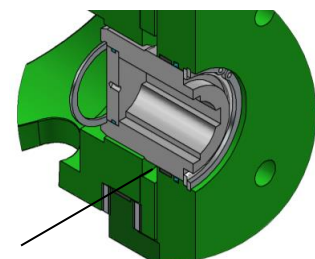
To ensure safe maintenance the spring is locked in place between two flanges in a closed container. At the end of the spring stroke the upper flange is stopped by an end stop (edge) in the cylinder. The lower flange is secured by a spring ring, inaccessible for disassembling.



*Safely secured spring ring*

## Carbon steel housing (stainless steel optional)

The housing is made of carbon steel, coated according to client specifications. To prevent corrosion of the valve interface, the stem adapter is made of stainless steel suitable for offshore conditions. This material has also a high strength to cope with the stresses caused by the output torques. As an option also a stainless steel housing is possible.

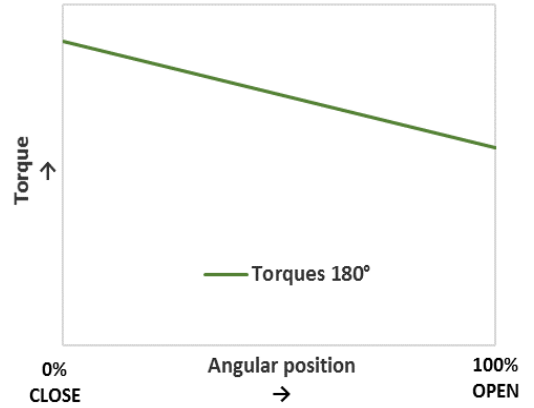


*High grade stainless steel stem adapter*



## Standard or custom torque curve

The torque characteristic is based on the shape of the curved slots in the curve-sleeve. The curve of the half turn Duxdrive has a linear shape for smooth output positioning. The resulting linear torque characteristic is ideal for modulating valves. To meet client specifications the torque curve could also be custom made.



*Curve-sleeve 180°*

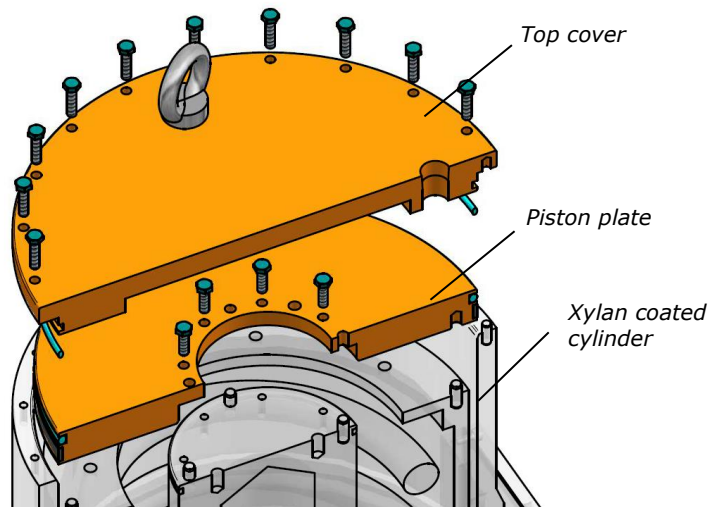




## Xylan coated cylinder

- **Ultimate corrosion protection**

The cylinder has an Xylan coating to protect against any possible corrosive influence of the medium. Xylan is a fluoropolymer coating system developed to provide ultimate corrosion resistance in marine environments. Applied at zinc phosphate steel panels, Xylan coating exceeded 500 hours during a salt fog test according to ASTM B-117.



- **No Slip-stick**

Another benefit of the Xylan coating is the low friction coefficient due to the polymer compounds. Therefore, the piston plate is able to move smoothly inside of the cylinder without the effect of slip-stick. As a result, the rotational output of the actuator has a high accuracy ideal for modulating valves. These valves need a precise adjustment of the valve position.



*Cylinder unit (exploded) & Xylan coated cylinder*



### **VDI/VDE 3845 position indication (dual optional)**

For precise position indication there is a VDI/VDE 3845 connection at one side of the actuator. The turning shaft is made of stainless steel suitable for offshore conditions. Here a limit switchbox, positioner or position indicator can be connected. Optional is a dual indication connection on either side of the actuator.



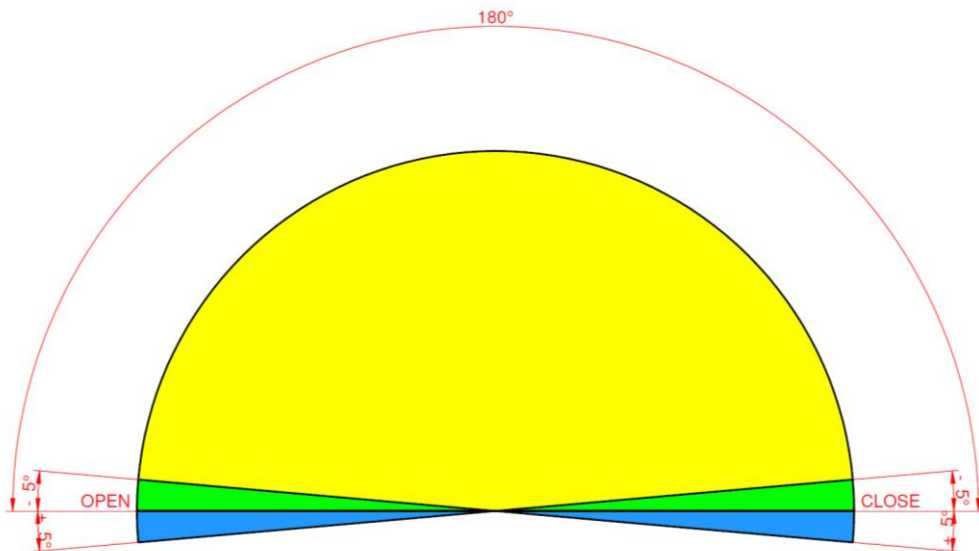
*Duxdrive actuator with Siemens positioner and Imtex switchbox*



## Optional adjustment flange

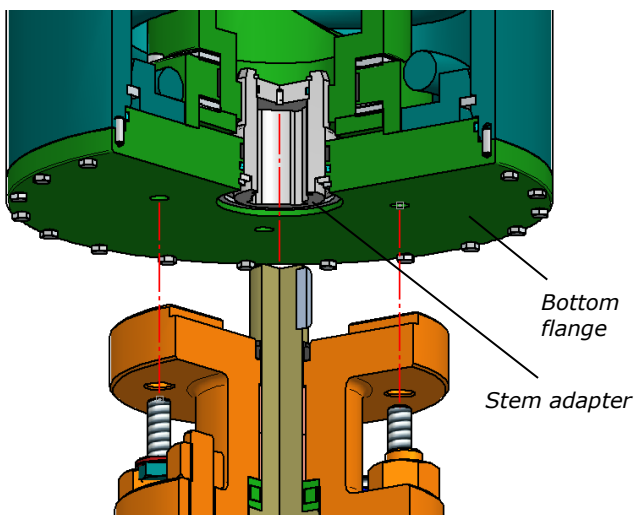
The Duxdrive has an uncomplicated design with a minimized number of parts. There are no adjustable travel stops inside of the actuator. An adjustment flange is optional, based on the valve accuracy of the open and close position. If only minor adjustment is required slightly oversized valve mounting holes would allow for precise positioning. If equipped with an adjustment flange the following is applicable:

- **Standard over- and undertravel: +5°/- 5°**
- **Custom over- and undertravel: +5°/ ...-20° for modulating applications**



*Over- and undertravel for a half turn Duxdrive*

## Easy and direct mounting



*Valve interface suitable for direct mounting*

The valve interface could be either according to ISO 5211 (e.g. F10, F12, F25) or custom made. Therefore direct mounting is possible resulting in easier building and disassembling in case of maintenance. Another benefit is a more compact system. In case of keyed valve stems the stem adapter has multiple keyways allowing four different mounting positions.

- **Standard ISO 5211 or custom**
- **Up to four different mounting positions**



## 4. MODEL TYPES

(model example)

<b>DDP</b>	-	<b>1</b>	-	<b>0950</b>	-	<b>2</b>	-	<b>FC</b>	-	<b>2</b>	-	<b>20002</b>
------------	---	----------	---	-------------	---	----------	---	-----------	---	----------	---	--------------

**Pneumatic  
Duxdrive**

Output angle	
90°	<b>1</b>
120° / ...	<b>2</b>
180°	<b>3</b>

Base type	
280 Nm *	<b>0280</b>
350 Nm	<b>0350</b>
950 Nm	<b>0950</b>
2500 Nm	<b>2500</b>
6000 Nm	<b>6000</b>
(larger on request)	...

Cylinder size **	
Minimal	<b>1</b>
Normal	<b>2</b>
Maximal	<b>3</b>

Fail action	
Fail Close	<b>FC</b>
Fail Open	<b>FO</b>
Double Acting	<b>DA</b>

Spring size	
Minimal	<b>1</b>
Normal	<b>2</b>
Maximal	<b>3</b>

**Serial number**  
with specified temp. range  
& seal material

\* Only for 90° output angle.

\*\* Cylinder size based on minimal system pressure from 3,5 Bar(g) to 6 Bar(g).  
Examples of complete operating range: 3,5 ... 10 Bar(g); 6 ... 10 Bar(g).