



VALVE AND FLOW CONTROL SPECIALISTS
SERVICE AND RELIABILITY

STAINLESS STEEL 2 PIECE BALL VALVE THREADED NPT

Figure No VBL-S3003

2 - PC SCREWED BODY STAINLESS STEEL BALL VALVES. FULL PORT. 3000 WOG

Thread End : NPT only
Materials : ASTM A351-CF8M (DIN 1.4408) Stainless Steel



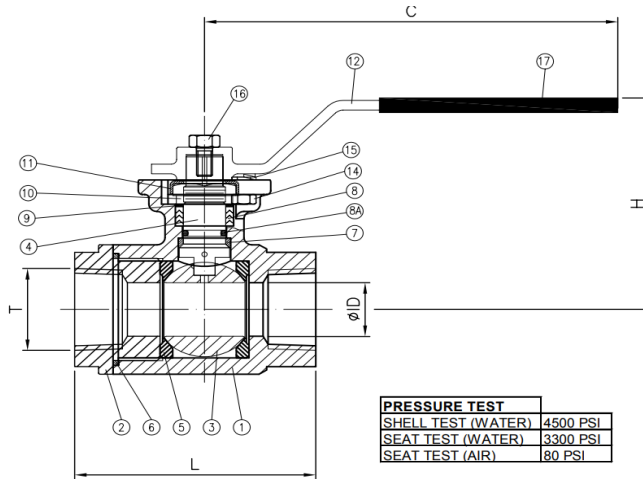
- * ISO-5211 mounting pad.
- * Pressure rating 3000 PSI CWP Max Temp 180 deg. C
- * Square stem for direct actuator mounting c/w antistatic device
- * Full bore to 40nb – 50nb is reduced bore.
- * Lever op as standard.

OPTIONS :

Electric or pneumatic actuated

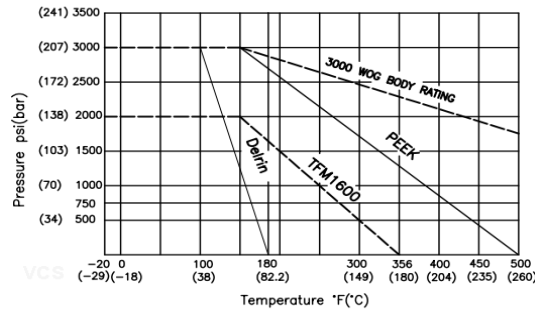
MATERIAL LIST

ITEM	PART	MATERIAL
1	BODY	CF8M
2	END CAP	CF8M
3	BALL	CF8M
4	ANTI STATIC STEM	SS316
5	BALL SEAT	DELRIN
6	BODY SEAL	PTFE. TEFLON
7	THRUST WASHER	PTFE. TEFLON
8	STEM PACKING	PTFE. TEFLON
8A	O-RING	VITON
9	THRUST WASHER	50%SS.50%PTFE
10	STEM NUT	SS304
11	LOCK SADDLE	SS304
12	HANDLE	SS316
13	STOP BOLT	SS304
14	STOP NUT	SS304
15	STOP WASHER	SS304
16	HANDLE BOLT	SS304
17	HANDLE SLEEVE	VINYL



PRESSURE TEST	
SHELL TEST (WATER)	4500 PSI
SEAT TEST (WATER)	3300 PSI
SEAT TEST (AIR)	80 PSI

SIZE	TORQUE (N.M)
8	9.04
10	9.04
15	11.3
20	13.56
25	18.08
32	33.9
40	40.68
50	40.68



DIMENSIONS (MM)

SIZE	ID	A	B	C	E	F	G	h	H	L	L1	D	T
8	9.6	F03	F04	126	9	25.9	41	8	72	75	88.9	11.4	NPT
10	9.6	F03	F04	126	9	25.9	41	8	72	75	88.9	11.4	
15	12.7	F03	F04	126	9	32.6	41	8	72	75	92	15	PT
20	17.5	F03	F04	126	9	38.4	43.8	8	75	81	99	16	
25	22.1	F04	F05	156	11	47.2	53.5	10	87	91	113	20	PF
32	29	F04	F05	156	11	58.9	59	10	93	110	127.1	21	
40	34.7	F05	F07	181	14	66.2	75.2	13	114	121	141	22	2999
50	34.7	F05	F07	181	14	82	75.2	13	114	145	155	23	

Details are current at time of publication and could vary with manufacturing enhancements