



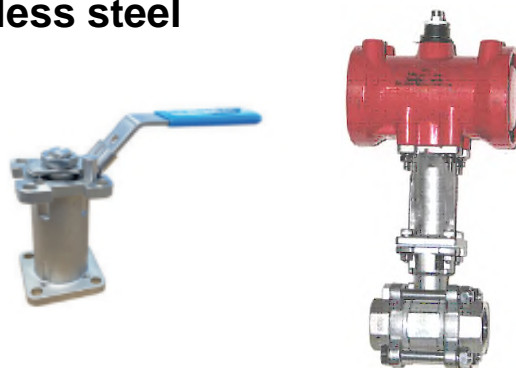
VALVE AND FLOW CONTROL SPECIALISTS
SERVICE AND RELIABILITY

ISO MOUNT BALL VALVE STEM EXTENSIONS

Standard 100mm height stainless steel

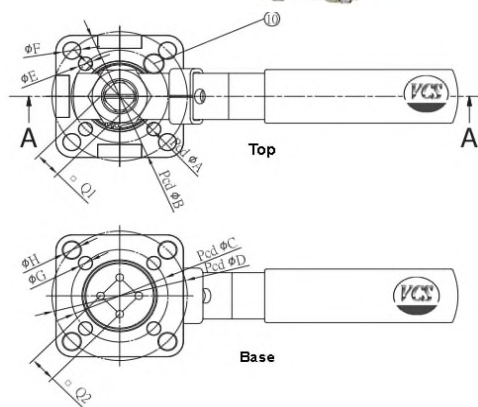
FIGURE NO. VBL-SSE

- End Type:** ISO top and bottom
Material: CF8 Stainless Steel
- 50% sintered SS / PTFE Packing
 - Secondary top packing PTFE.
 - 100mm height across the size range.
 - Size range for 8nb to 150nb valves.
 - Optional height lengths to 300mm
 - Optional special alloys



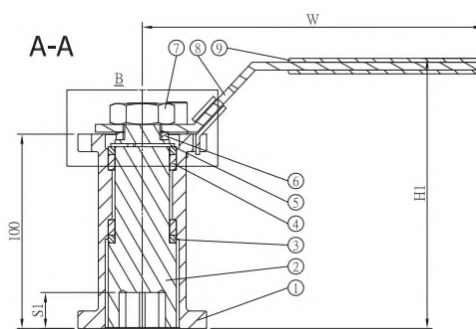
VCS extensions are a very cost effective way to lift actuation away from any heat in the production hence insulating the actuator particularly required on electrics to alleviate thermal cut outs. They allow for lagging of pipework and also give an additional double sealing within the extension

The VBL-SSE stainless steel units are manufactured to suit ISO 5211 which means retrofitting of these to any existing installed ISO valves on site is easy quick and very economical.



Material Specifications		
1.	Mount	CF8 Stainless Steel
2.	Stem	AISI 304 Stainless Steel
3.	Stem Packing	50% Stainless Steel
4.	Stem Packing	PTFE
5.	Retainer Ring	AISI 420 Stainless Steel
6.	Square Washer	AISI 304 Stainless Steel
7.	Handle Nut	AISI 304 Stainless Steel
8.	Handle	AISI 304 Stainless Steel
9.	Handle Cover	PVC
10.	Stop Pin	AISI 304 Stainless Steel
11.	Spring Washer	AISI 304 Stainless Steel
12.	Stem Nut	AISI 304 Stainless Steel
13.	Handle Cover	Plastic
14.	Lock Device	AISI 430 Stainless Steel

Dimensions			
Size	□ Q1	□ Q2	Kg
1	9.0	9.0	0.6
2	9.0	9.0	0.6
3	11.0	11.0	0.9
4	14.0	14.0	1.6
5	17.0	17.0	3.1
6 Type 1	22.0	22.0	4.1
6 Type 2	22.0	27.0	4.1



Dimensions												
Size	vcs											
	H1	S	S1	W	ØA	ØB	ØC	ØD	ØE	ØF	ØG	ØH
1	131	10	14.5	117	F03	F04	-	F03	6.0	6.0	-	6.0
2	131	10	14.5	117	F03	F04	-	F04	6.0	6.0	-	6.0
3	132	12	16.5	170	F04	F05	F04	F05	6.0	7.0	6.0	7.0
4	139	16	18.5	182	F05	F07	F05	F07	7.0	9.0	M6	9.0
5	147	19	28.5	333	F07	F10	-	F10	9.0	11.0	-	11.0
6 Type 1	147	24	30.5	333	F10	F12	-	F10	11.0	13.0	-	11.0
6 Type 2	147	24	31.5	333	F10	F12	-	F10	11.0	13.0	-	11.0

Uncontrolled document subject to change without notice

VALVE AND FLOW CONTROL SPECIALISTS

Brisbane Sydney Melbourne Darwin

E-mail sales@valveandflowcontrolspecialists.com