



**VALVE AND FLOW CONTROL SPECIALISTS**  
SERVICE AND RELIABILITY

## Stainless Steel Direct Steam Injector

### Steam Sparge Process heating

**FIGURE NO. VSIN-S40M**

**End Type:** BSP  
**Material:** 304 Stainless Steel  
 Body design rating PN25  
 Operating Pressures 0,5 bar to 17 Bar  
 Max steam Temp 205 Deg C  
 Process media heat temp to Max 90C vented

Direct steam injectors use steam to raise the temperature of water or other liquids in basins or vessels. They work by using a jet of steam to draw in the liquid through radial side ports, mix it, and distribute the heated liquid throughout the tank or vessel. The circulation induced by the injector ensures thorough mixing and when selected correctly avoids temperature stratification.

DN 40 size has been found to be ideal for medium sized vessels dependant on flowrates. For larger vessels to ensure good fluid dynamics it is better to use 2 or more injectors mounted in parallel within the tank.

The VSIN40M is available with either male thread or butt-weld connection and are fitted to pipework in the tank, or to a tank wall connection.

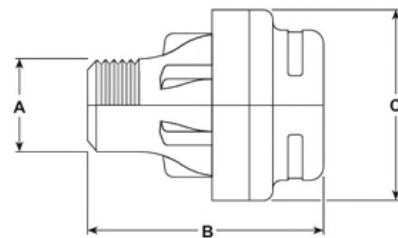
These are also ideal for boiler feed tank heating and de-aeration

There are no moving parts its design is compact design - minimises noise and vibration

For smaller tanks or those larger that require more controlled or "gentle" warm up and heating of product consider using VSI15 series steam sparges known as "steam flutes". The circulation induced by the injector ensures thorough mixing and avoids temperature stratification with a minimum of noise. The VCS flute unit is now in 5 sizes 1/2", 3/4", 1", 1 1/2" and 2" which can be installed on a manifold just like the VSIN-S40M's.



Injector type	VSIN40M
Steam pressure bar g	Saturated steam capacity kg/h
0.5	222
1	400
2	580
3	805
4	970
5	1125
6	1295
7	1445
8	1620
9	1820
10	1950
11	2250
12	2370
13	2595
14	2710
15	2815
16	3065
17	3200



A	B	C	Weight
1 1/2"	118	92	1.6 kg

Uncontrolled document subject to change without notice

VALVE AND FLOW CONTROL SPECIALISTS  
 Brisbane Sydney Melbourne Darwin  
 E-mail sales@valveandflowcontrolspecialists.com